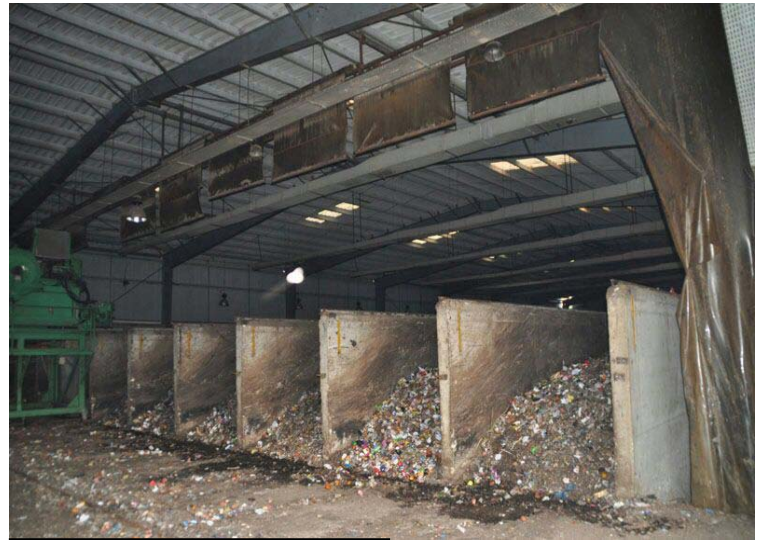


Tyre Organic Solid Waste Facility

Tyre, Lebanon

Commencing operations in 2011, the Tyre compost facility is the first agitated bay facility in the Middle East. It is part of a larger complex that sorts recyclables and organics out of the Municipal Solid Waste (MSW) stream from the Municipality. The incoming MSW goes thru a bag opener and then 3" screening process. The >3" material is predominantly inorganics and conveyed to a manual picking station for recovery of recyclables such as glass, metals, etc... The <3" material is comprised of predominantly food waste and other organics and conveyed to the compost facility. The compost facility incorporates ten 6.5 feet wide x 300 feet long bays using one 50 HP BDP agitator to co-compost @ 100 WTPD of organics. These organics vary daily in moisture content from 20% solids to 50% solids so it was critical that an agitated type compost system be utilized. The compost portion of the facility is staffed by 3 full time employees and operates 7 days per week 8 hours per day. Average ambient temperatures at the facility range from 35F to 90F. A traditional wood chip type biofilter is used for odor control. The material undergoes 21 days of active composting in the bays. Afterwards the material is transferred to aerated Curing bunkers for a minimum of 45 days. The cured compost is then fine screened and sold to local farmers.



Loading End of Compost Bays



Materials Recovery (MRF) and Compost Facility

Primary Compost Material	@ 100 WTPD Organic Solid Waste
Key Characteristics	20% - 50% DS range.
Secondary Compost Material	None
Key Characteristics	Not applicable
Facility Start Up	July 2011
Total Facility Size	@8 acres
Facility Engineer	Grossimex SARL
Plant Contact	Ali Amhaz – Sour Union of Municipalities
BDP Contact	Richard Nicoletti – Compost Systems Manager



Compost in Aerated Curing Bunker